



## Walk-in Coolers and Freezers



INNOVATION AND EXCELLENCE SINCE 1985



## WALK-IN STANDARD FEATURES

Listening to our customers is what we do best. They have inspired our engineering and manufacturing teams to design, refine and build walk-ins that meet their highest expectations. Our panel raw materials and hardware components are of the finest quality in the industry. We can build a walk-in refrigeration system that meets the most demanding customer requirements, and provide peace-of-mind that your investment will last a lifetime.

### PANELS AND INSULATION

#### PANEL CONSTRUCTION



##### Modular Panel Construction

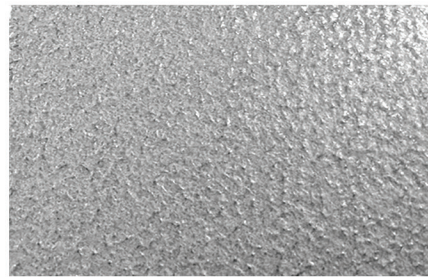
Modular wall, floor and ceiling panels are fabricated in our plant using state-of-the-art robotic manufacturing and assembly processes; for precise fit, easy assembly and long life. Panels are 4" thick and manufactured with 100% uniform AK-XPS4 rigid foam. Insulation is permanently bonded to primed metal surfaces, to form a non-deteriorating structurally-rigid panel.

Panel assembly is accomplished with a time-tested, corrosion resistant cam action locking system, and a factory installed NSF compliant compression gasket, to form rigid, airtight joints.



##### Airtight Joints

#### STANDARD PANEL FINISH



##### Acrylume® Stucco Embossed Finish

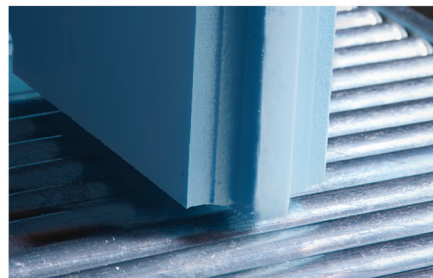
Wall and ceiling panel interiors and exteriors are laminated with 26-gauge zinc-aluminum (Acrylume®) coated steel, which is stucco embossed and coated with corrosion resistant acrylic paint.

#### INSULATION PERFORMANCE CHARACTERISTICS

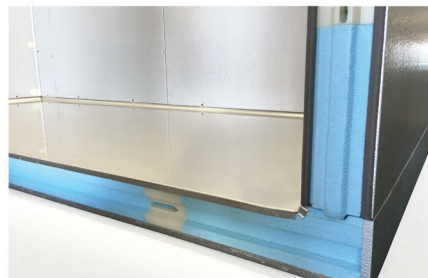


##### Long-Life Extruded Foam

AK-XPS4 rigid foam is a closed cell, void-free hydrophobic (water-resistant) material that maintains the highest possible R-value over time, to ensure long term energy efficiency. AK-XPS4 meets and exceeds the EISA Energy Independence & Security Act of 2009 with R-29 value for Coolers and R-32 value for Freezers. Our AK-XPS4 insulation is backed by The Dow Chemical Company with a **50 year thermal (R-value) warranty**.



#### STANDARD FLOOR



##### Strong Floor Construction

Floor panels are also 4" thick and manufactured using heavy gauge smooth stainless steel, rated to support 700 pounds per-square-foot of uniformly distributed floor load. They include a 1/2"-radius cove along the interior perimeter, to make cleaning easier. Floorless walk-ins are provided with NSF approved floor screeds, to sit flat on an existing leveled floor.



## WALK-IN STANDARD FEATURES

Walk-in standard heights are 6'-6", 7'-7", 8'-7" with floor; or 6'-2", 7'-2", 7'-7", 8'-2" without a floor. Custom panels are available in 1" increments to meet customer space and floorplan requirements. The AmeriKooler and Heatcraft refrigeration system lineup includes: Indoor and Outdoor Remote and Self-contained packages, as well as a variety of energy monitoring control systems. All are backed by reliable service support from Heatcraft Refrigeration Products.

### STANDARD DOOR CONSTRUCTION

#### FLUSH DOOR HARDWARE



Spring Assisted Hinges



Door Closer



Deadbolt Keyed Handle Latch

#### INSTALLATION KIT



Fast & Easy Assembly

Standard door sizes are: 36", 30" or 26" wide, all with a 76" high clear opening. Doors are constructed with 4" thick AK-XPS4 rigid foam insulation and finished with 26-gauge zinc-aluminum (Acrylume®) coated steel, which is stucco embossed and coated with corrosion resistant acrylic paint.

Each door includes: two heavy duty, super cam-rise spring-assisted hinges; a heavy pull handle with key lock and inside safety release; and a door closer is provided for extra positive smooth closing. To ensure a positive seal, the door includes a three sided magnetic gasket and a flexible double wiper at the bottom edge of the door.

We designed our panels so that job-site installation is fast and easy. All walk-ins are shipped with a hardware and installation instruction kit that includes: the shop drawing, detailed installation instructions, hex wrench for cam-lock panel assembly and PVC press fit caps.

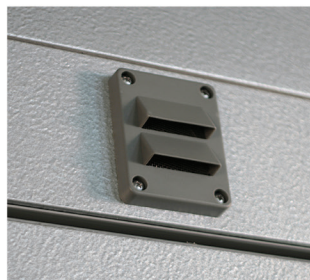
#### DOOR JAMB



LED Light



Digital LED Thermometer & Switch



Heated-Pressure Relief Vent

The door jamb and door are constructed with a non-conductive heavy-duty PVC extrusion that provides a thermal barrier. The jamb includes an LED light fixture mounted on the center/top of the jamb, which provides extra space for shelving posts. A digital LED Thermometer (F°/C°) is provided, with On/Off pilot light switch.

Freezer doors are equipped with a heated pressure relief vent mounted on the door jamb. In addition, the doors include a temperature controlled heater wire to ensure a positive frost free seal.

## POPULAR WALK-IN OPTIONS



3<sup>RD</sup> SPRING ASSISTED DOOR HINGE



LED LIGHTS  
(mounted on the jamb or loose)



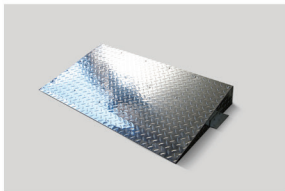
STRIP CURTAIN



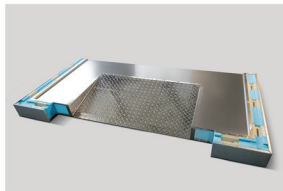
LOCKING BAR



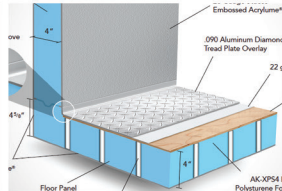
DIAMOND KICK PLATE  
(interior and/or exterior)



EXTERIOR RAMP



INTERIOR RAMP



STAINLESS STEEL AND  
REINFORCED FLOORS



INSULATED VIEWING WINDOWS  
(12"x12" / 12"x24")



DIGITAL AUDIO/VISUAL ALARM

Many other optional features are available upon request. Please call us for details and pricing.

## WARRANTY PROTECTION



50 Year Thermal  
Warranty



15 Year Panel  
Warranty



5 Year Doors &  
Floors Warranty



1 Year Labor  
Warranty



1 Year Parts  
Warranty

## CODE APPROVALS AND INDUSTRY LISTINGS



National Sanitation  
Foundation



Underwriters  
Laboratory



Miami-Dade  
County Approved



State of Florida  
Approved



LARR LA  
Research



City of New York-MEA



State of Oregon



EISA Compliant



City of Houston



Hydrophobic  
Insulation ASTM C272

## INSULATION TEST STANDARDS

WATER ABSORPTION  
per ASTM C272

WATER PERFORMANCE  
per ASTM E96

WATER AFFINITY  
Hydrophobic

COMPRESSIVE STRENGTH  
per ASTM D1621

SELF IGNITION,  
TEMP 896°F  
per ASTM-D1929

FLASH IGNITION,  
TEMP 734°F  
per ASTM-D1929

FLAME SPREAD 15,  
SMOKE DENSITY 165  
per ASTM-E84